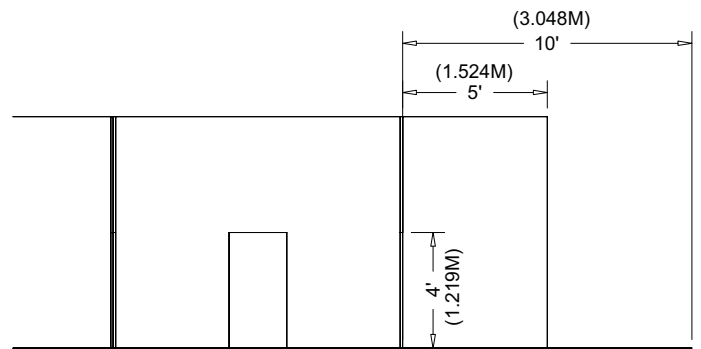
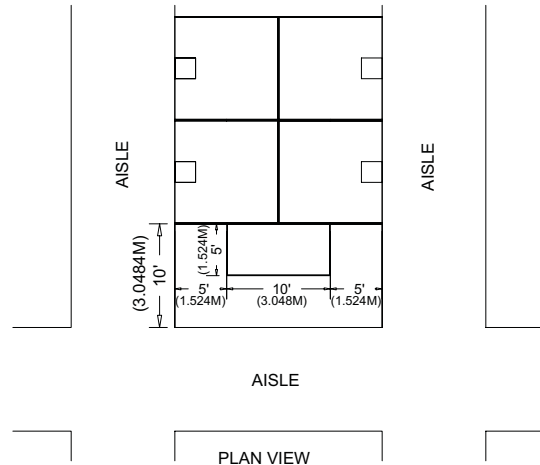


FRONT VIEW



LEFT SIDE VIEW



PLAN VIEW

End-cap Booth

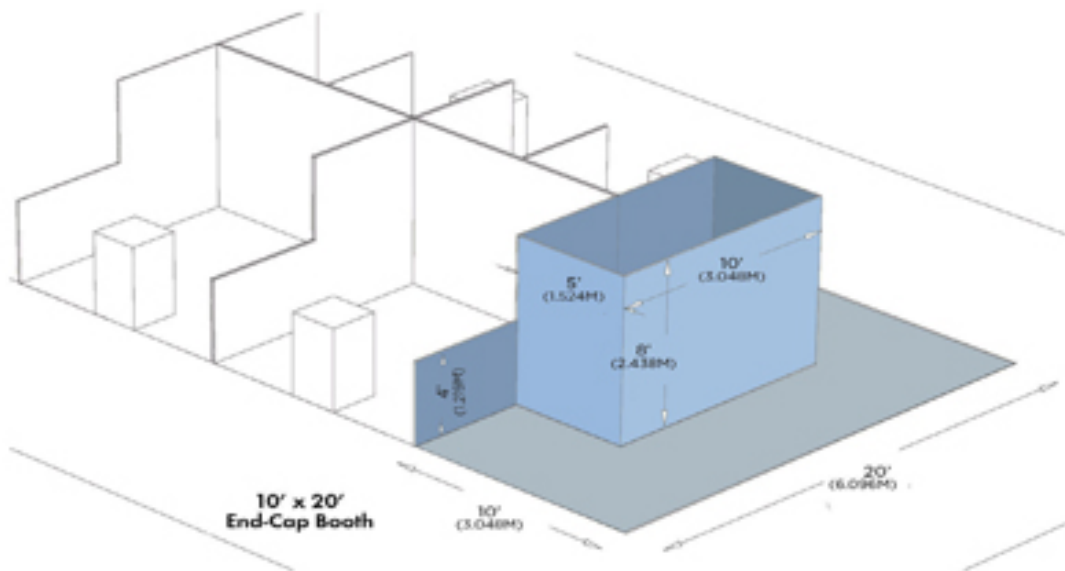
An End-cap Booth is exposed to aisles on three sides and comprised of two booths.

Dimensions

End-cap Booths are generally 10ft (3.05m) deep by 20ft (6.10m) wide, but also applies to 20ft deep booths and larger if applicable. T

Use of Space

The maximum back wall height of 8ft (2.44m), including signage, is allowed only in the 10ft (3.05m) center portion of the booth. A maximum height of 4ft (1.22m) is allowed on the two (2) 5ft (1.52m) 'wings', permitting adequate line of sight for the adjoining In-line Booths.



This edition of IAEE's Guidelines for Display Rules and Regulations is made possible by a generous grant from **F R E E M A N**