

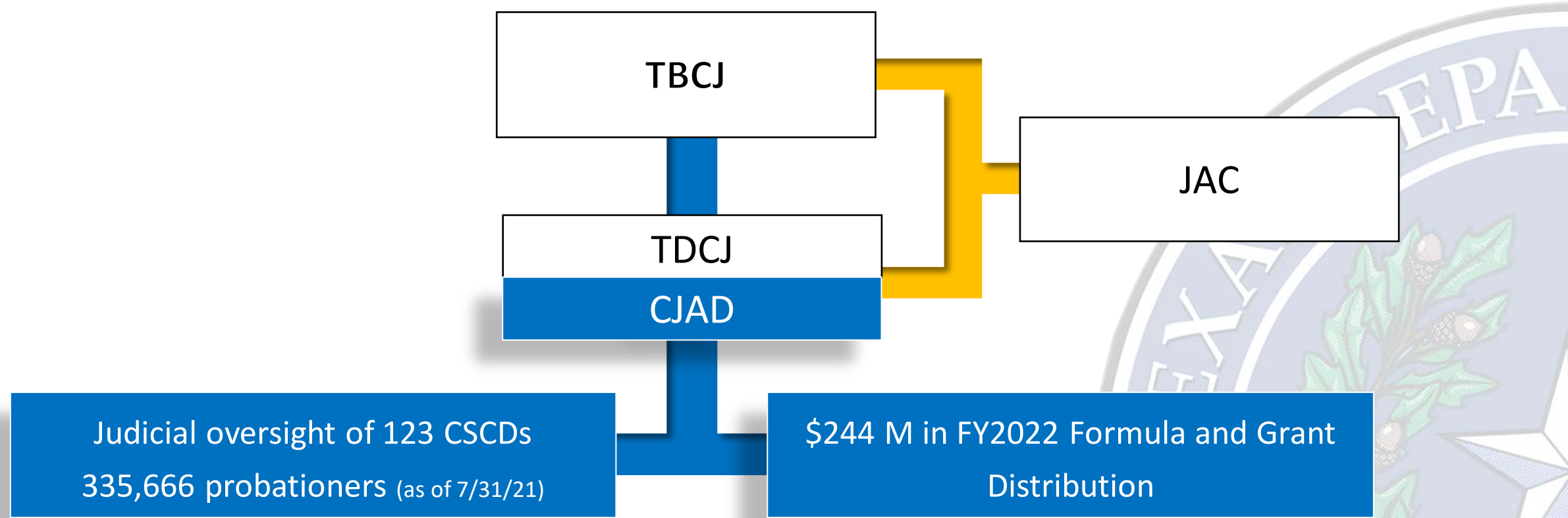
# **Risk Assessment Overview**

**2021 Judicial Summit on  
Mental Health**

**The Texas Department of  
Criminal Justice**

**October 14, 2021**





The Texas Board of Criminal Justice (TBCJ) and Texas Department of Criminal Justice (TDCJ)-Community Justice Assistance Division (CJAD) are advised by the 12 member Judicial Advisory Council (JAC)

- 6 members are appointed by the Chief Justice of the Texas Supreme Court
- 6 members are appointed by the Presiding Judge of the Texas Court of Criminal Appeals

*Probation = Community Supervision and Corrections Departments (CSCDs)*



State Oversight

## TDCJ - CJAD

- Provides oversight of 123 CSCDs through standards, audits, evaluations, technical assistance, etc.
- Coordinates statewide treatment programs
- Provides about two-thirds of CSCDs' funding

Local Oversight

## Local Judges

- Create or Consolidate CSCDs
- Appoint a CSCD Director & Fiscal Officer
- Approve CSCD Budget and Strategic Plan

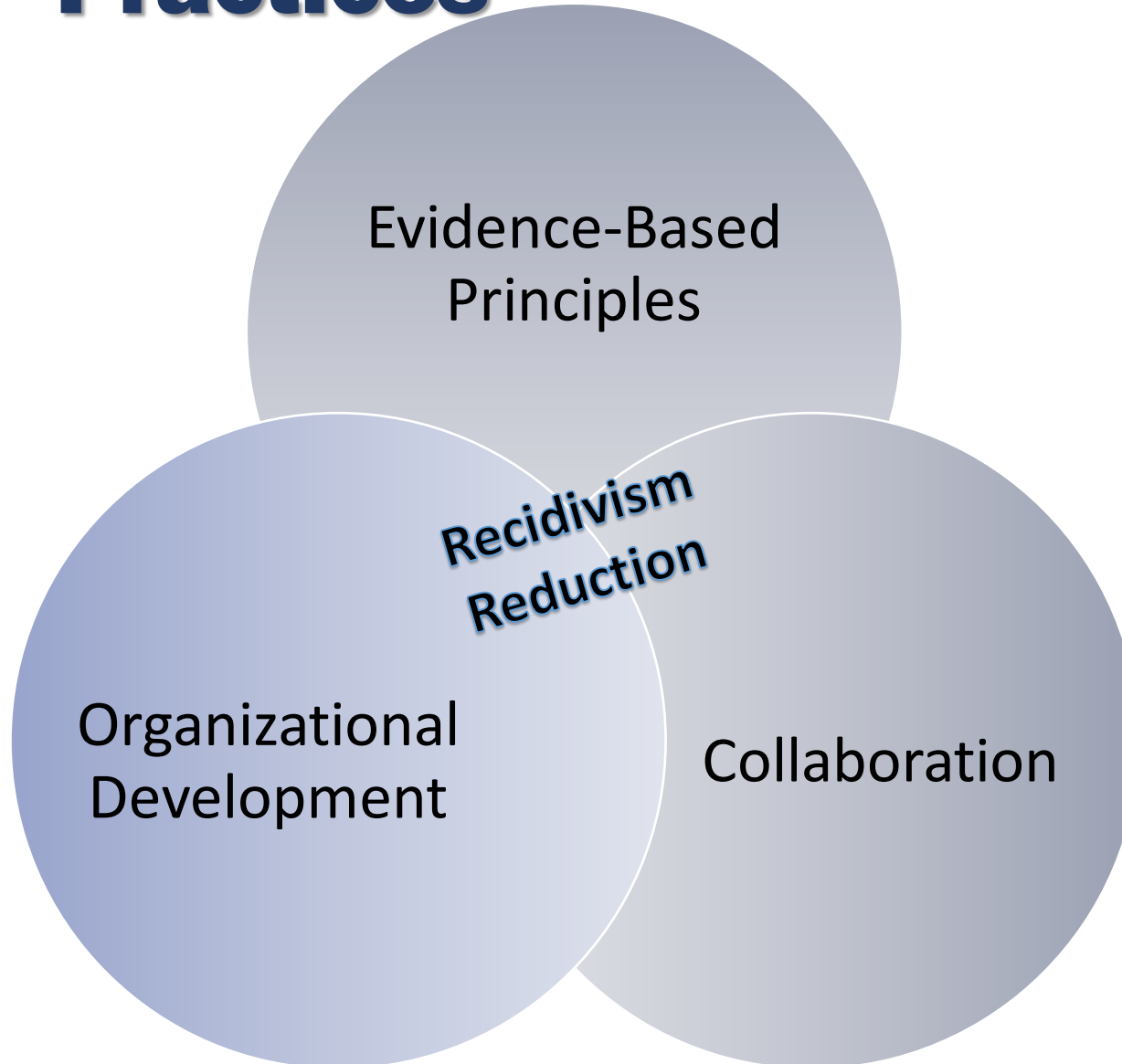
# Texas Probation (Community Supervision)

Local  
Probation Office

## CSCD

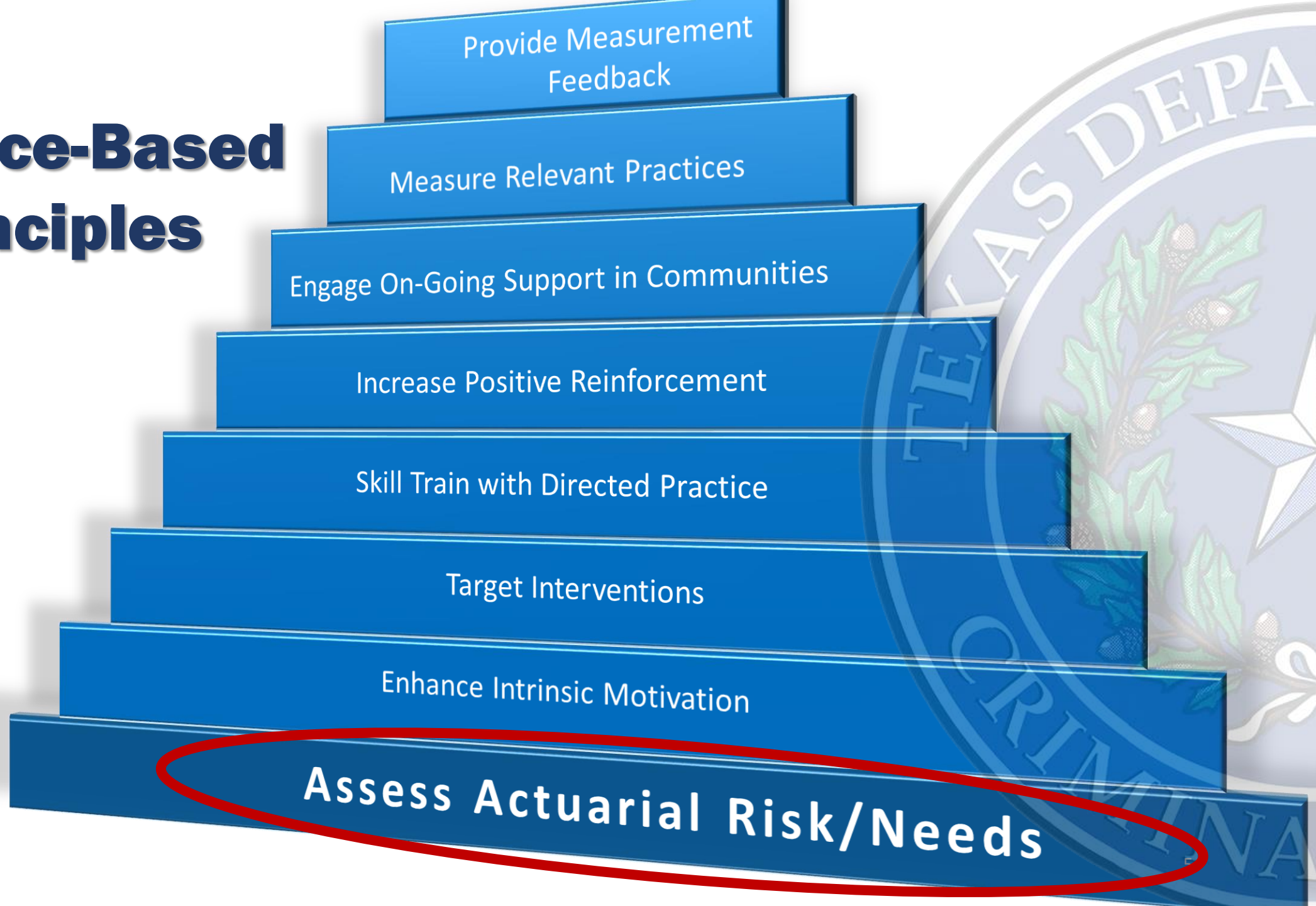
- Supervises individuals based on court orders, assessments and effective interventions
- Individualizes supervision based on local resources
- Makes referrals to local services and provides treatment/educational programs
- Enforces risk-based progressive sanctions models and offers incentives when individuals accomplish certain goals.

# Evidence-Based Practices



By using the best available evidence from research as the foundation of policy development and program implementation, supervision can be individualized to address the population's risks and needs

# Evidence-Based Principles



# Types of Instruments

- Screening Tools

- Suicide and Medical/Mental/Developmental Impairments Form (suicide risk)
- Texas Uniform Health Status Update (TUHSU—medical screen)
- Substance Abuse Subtle Screening Inventory (SASSI)

- Criminogenic Risk and/or Needs Assessments

- Levels of Service Inventory-Revised (LSI-R)
- Correctional Offender Management Profiles for Alternative Sanctions (COMPAS)
- Static 99 (sex offenders)
- Texas Risk Assessment System (TRAS)

- Specialized Assessments

- Addiction Severity Index (ASI—substance abuse)
- Tests of Adult Basic Education (TABE)
- Danger Assessment (domestic violence)
- Adverse Childhood Experience Quiz (ACE—trauma)





# Texas Risk Assessment System (TRAS)

## Pretrial

PRAISTX

ORAS/TRAS

Court Appearance

Public Safety

Victim Safety

## Probation

Court Conditions

Supervision Levels

Program Referrals

Case Management

## Prison

Classification Levels

Program Referrals

## Reentry

Referral Needs

Program Referrals

Parole Supervision  
Levels

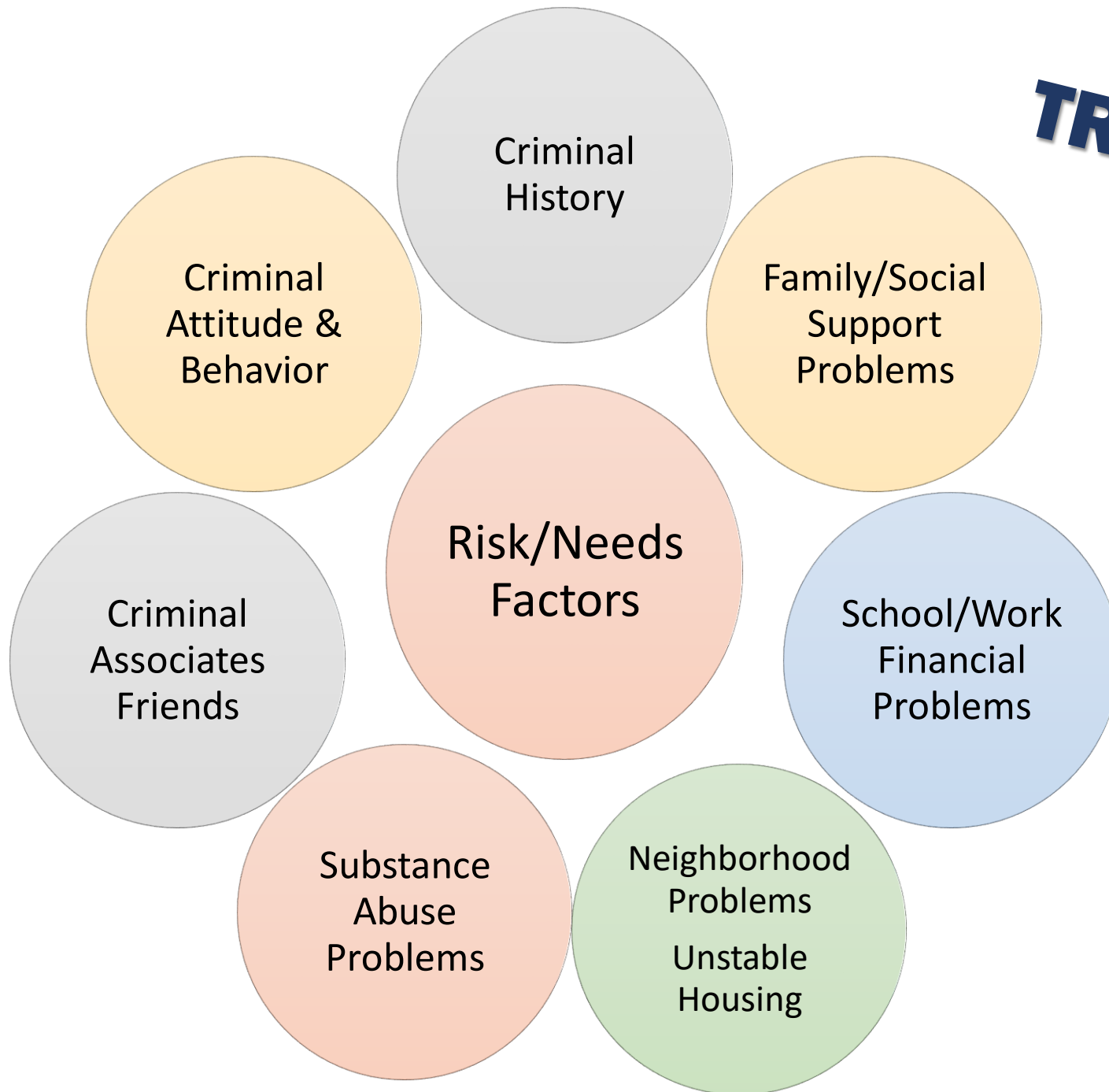
## Parole

Supervision Levels

Program Referrals

Case Management

# **TRAS Criminogenic Domains**





# Risk, Need and Responsivity

- Risk Principle

- Individuals re-offend at differential rates
- Reserve intensive interventions for higher risk individuals
- Intensive interventions can make low risk individuals worse

- Need Principle

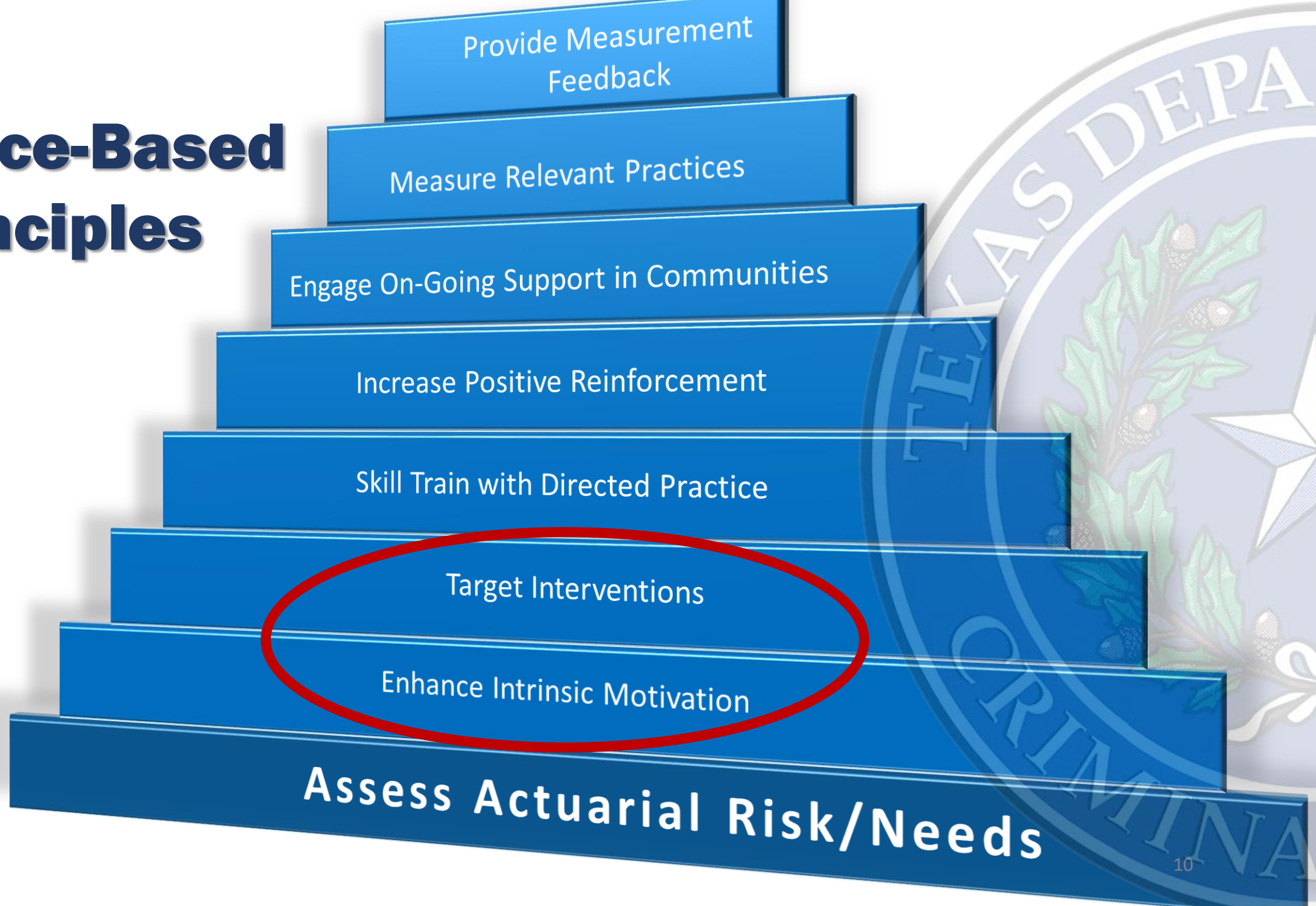
- Individuals have criminogenic needs or dynamic risk factors
- Effective interventions target only those areas that are high risk

- Responsivity—Potential Barriers to Success

- Mental illness
- Transportation
- Language
- Gender
- Motivation



# Evidence-Based Principles



# Putting It All In Context

- Risk Principle

- Differential levels of risk
- Differential levels of supervision
- Risk to recidivate

- Need principle

- Focus on those individuals who are moderate to high risk
- Target criminogenic needs regardless of offense type
- Prioritize criminogenic needs & follow-up

- Responsivity

- Reduce barriers to increase successful completion
- Use cognitive-behavioral interventions





# Supervision

- Texas Risk Assessment System
  - Actuarial Risk/Needs Assessment Process
- Risk Management
  - GPS Monitoring
  - Specialized Caseloads
  - Court Conditions
- Risk Reduction
  - Treatment
  - Specialized Programming
  - Specialized Caseloads
- Progressive Sanctions Models
  - Incentives and Sanctions
  - Resources



# Resources

- [tdcj.state.tx.us](http://tdcj.state.tx.us)
- [tdcj.state.tx.us/divisions/cjad/index.html](http://tdcj.state.tx.us/divisions/cjad/index.html)
- [appa-net.org/eweb](http://appa-net.org/eweb)
- [cmitonline.org](http://cmitonline.org)
- [lbb.state.tx.us](http://lbb.state.tx.us)
- [legis.state.tx.us](http://legis.state.tx.us)
- [nicic.gov](http://nicic.gov)



# **Thank You!**

Carey A. Green  
Division Director  
Community Justice Assistance Division  
Texas Department of Criminal Justice  
209 West 14th Street, Suite 400  
Austin, Texas 78701  
512-305-9350

